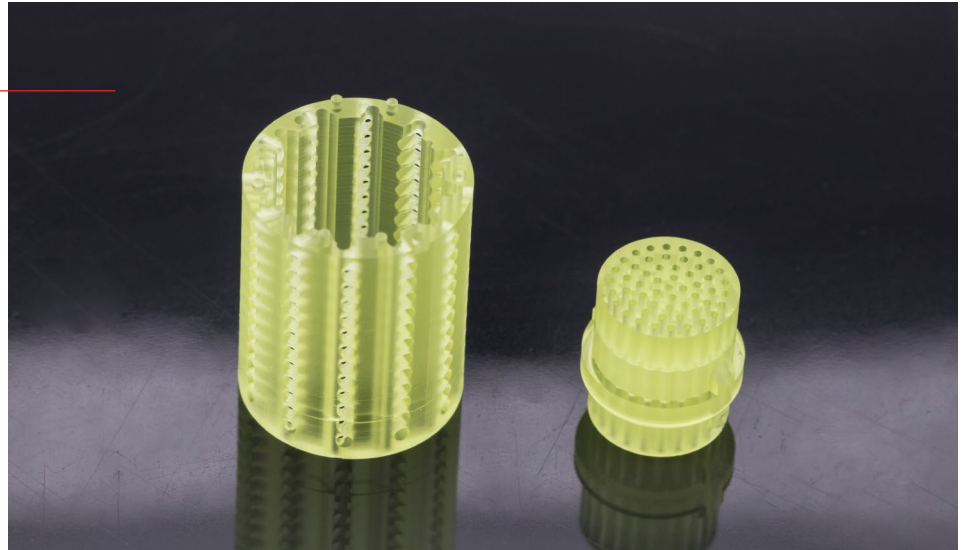


# RG Resin

RG from the Forward AM Ultracur3D<sup>®</sup> photopolymer resin line is a durable engineering material which can be used to print functional end-use parts. In addition to being biocompatible, it doesn't uptake any water and is suitable for a wide range of applications such as electrical cases, medical devices, snappers, and functional prototyping.



		Cured Parts	Standard
<b>Tensile Properties</b>	TENSILE STRENGTH	42 MPa	ASTM D638
	ELASTICITY MODULUS	274.3 MPa	ASTM D638
	ELONGATION AT BREAK	11.8%	ASTM D638
<b>Flexural Properties</b>	BENDING STRENGTH	77.7 MPa	ASTM D790
	FLEXURAL MODULUS	2.1 GPa	ASTM D790
<b>Temperature Properties</b>	DISTORTION TEMPERATURE @0.45MPa	56.5 °C	ASTM D648 - 07
<b>General Properties</b>	HARDNESS	77 Shore D	ASTM D785
	VISCOSITY	1090 cP	-
	STANDARD COLOR	Yellow trans / Black	-
	CELL CULTURE SURVIVAL RATE INVITRO	91.7%	-

RG has passed the requirements associated with the following ISO 10993 biocompatibility tests.

ISO Standard	Test Description
ISO 10993-5: 2009	In Vitro Cytotoxicity
ISO 10993-11: 2017	Pyrogen Test
ISO 10993-11: 2017	Acute Skin Toxicity Test
ISO 10993-10: 2010	Skin Sensitization Test
ISO 10993-10: 2010; ISO 10993-2: 2006	Skin Irritation Test

<sup>1</sup> Final properties are dependent on print conditions, post-processing operations, and part geometry.

<sup>2</sup> Test samples were UV cured and heat cured.